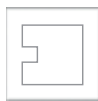
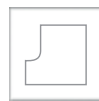




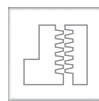
# CNC



Grooving & Sizing



Profiling & Chamfering



Jointing & Rebating



Frame & Panel door



Carving



Clamping Systems & Adapters

Index

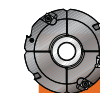
Sawing



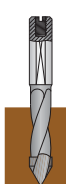
CNC



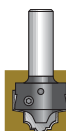
Cutting



Drilling

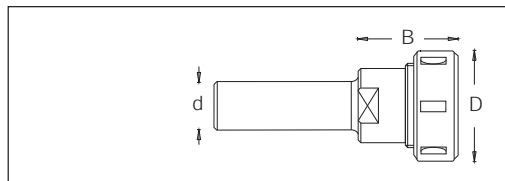


Routing



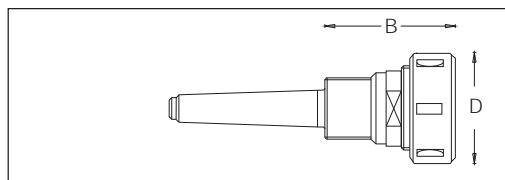
Plastic, Corian, Aluminum

Custom Tooling



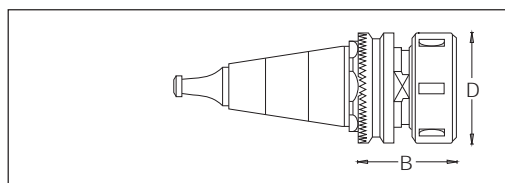
## Straight Adapter for Er Collets

Code No.	Adapter standard	øD	B	ød	Collet standard
642 006		50	55	20	ER32
642 007		63	55	25	ER40



## Morse Adapter for Er 32 Collet

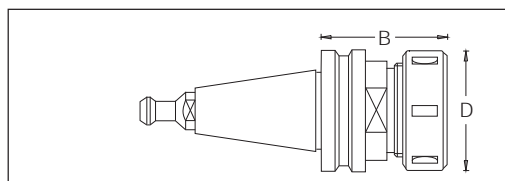
Code No.	Adapter standard	øD	B	Collet standard
642 005	M2	50	60	ER32



## ISO Tool Holder with Pull Stud for Morbidelli, SCM.Machines

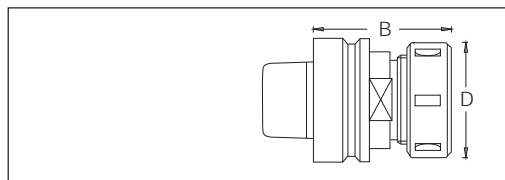
Code No.	Adapter standard	øD	B	Collet standard
641 010	ISO 30	50	55	ER32

Iso Tool holders not include pullstud



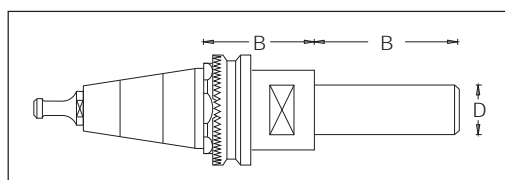
## ISO Tool Holder

Code No.	Adapter standard	øD	B	Collet standard
641 011	ISO 30	50	42	ER32
641 012	ISO 30	63	55	ER40
641 021	ISO 40	50	63	ER32
641 019	ISO 40	63	73	ER40



## HSK Tool Holder

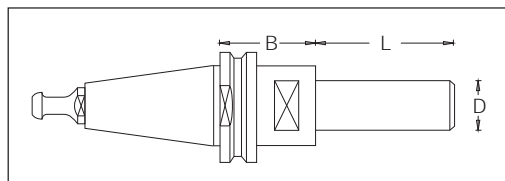
Code No.	Adapter standard	øD	B	Collet standard
641 031	HSK63	50	76	ER32
641 030	HSK63	63	76	ER40



## ISO 30 Tool Holder with Arbor for Morbidelli Machines

Code No.	Adapter standard	øD	B	L
643 011	ISO 30	30	35	70
643 012	ISO 30	30	35	100

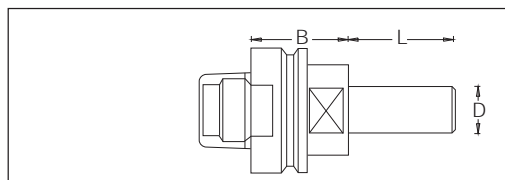
Iso Tool holders not include pullstud



## ISO Tool Holder with Arbor

Code No.	Adapter standard	øD	B	L
643 020	ISO 30	30	35	70
643 021	ISO 30	30	35	100

Iso Tool holders not include pullstud



## HSK Tool Holder with An Arbor

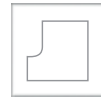
Code No.	Adapter standard	øD	B	L
643 001	HSK63	30	33	55
643 002	HSK63	30	33	100



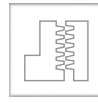
# CNC



Grooving & Sizing



Profiling & Chamfering



Jointing & Rebating



Frame & Panel door



Carving



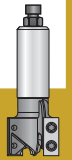
Clamping Systems & Adapters



Sawing



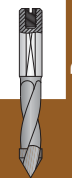
CNC



Cutting



Drilling



Routing

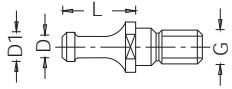


Plastic, Corian, Aluminum

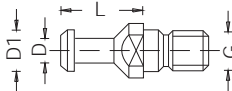
Custom Tooling



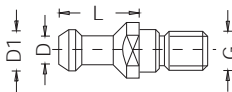
## Pullstud for Machines



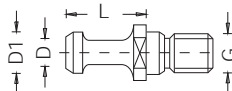
For machines	Adapter	Code No.	øD1	øD	L	G
Mrbidell, SCM	ISO 30	650 010	8.5	6.5	22	M10



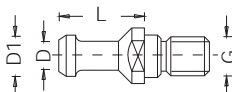
Busellato, weeke, bulleri, maka,	ISO 30	650 011	13	9	24	M12
Cosmec, reichenbacher	ISO 40	650 020	19	14	26	M16



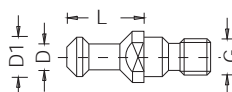
Alberti, vitap, masterwood	ISO 30	650 013	13	9	24	M12
----------------------------	--------	---------	----	---	----	-----



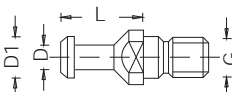
Esseteam	ISO 30	650 014	12	8	24	M12
----------	--------	---------	----	---	----	-----



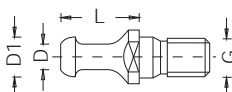
CMS	ISO 30	650 015	12.8	9	24	M12
-----	--------	---------	------	---	----	-----



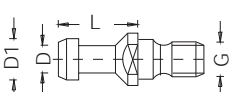
Belotti	ISO 30	650 016	13	9	23	M12
---------	--------	---------	----	---	----	-----



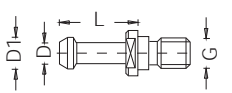
Biesse	ISO 30	650 017	12	8	24	M12
--------	--------	---------	----	---	----	-----



Biesse Masterwood	ISO 30	650 018	12	8	24	M12
-------------------	--------	---------	----	---	----	-----



Komo	BT 30	650 030	13	9	24	M12
------	-------	---------	----	---	----	-----



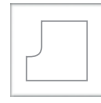
Shoda (BT30-BT40), heian (BT35)	BT 30	650 031	11	7	23	M12
	BT 35	650 040	13	8.5	28	M12
	BT 40	650 050	15	10	35	M16



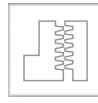
# CNC



Grooving & Sizing



Profiling & Chamfering



Jointing & Rebating



Frame & Panel door



Carving



Clamping Systems & Adapters



Sawing



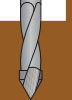
CNC



Cutting



Drilling

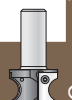


Routing

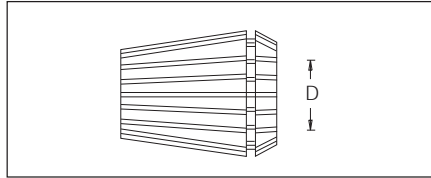


Plastic, Corian, Aluminum

Custom Tooling



## Collets for ER32 Nut



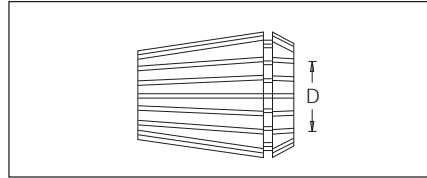
øD	Code No.
2-3	615 040
3-4	615 041
4-5	615 042
5-6	615 043
6-7	615 044
7-8	615 012
8-9	615 046
9-10	615 010
10-11	615 048
11-12	615 049
12-13	615 009
13-14	615 051
14-15	615 008
15-16	615 053
16-17	615 054
17-18	615 055
18-19	615 056
19-20	615 011
Complete set for ER32 collets	615 090

## Tightening device

	Code No.
For ISO30 tool holder	642 001
For ISO40 tool holder	642 002
For HSK63 tool holder	642 003
For HSK63/ISO30 tool holder	642 004
For ISO30 tool holder for Morbidelli Machines	642 008



## Collets for ER40 Nut



øD	Code No.
3-4	615 060
4-5	615 061
5-6	615 062
6-7	615 063
7-8	615 064
8-9	615 065
9-10	615 007
10-11	615 031
11-12	615 032
12-13	615 006
13-14	615 070
14-15	615 005
15-16	615 030
16-17	615 073
17-18	615 074
18-19	615 004
19-20	615 003
20-21	615 077
21-22	615 078
22-23	615 079
23-24	615 080
24-25	615 002
25-26	615 001
Complete set for ER40 collets	615 091

## Key

	Code. No.
For ER32 nut	631 004
For ER40 nut	631 003

